

NOTICE TO MARINERS

01.03.2017

DUDGEON OFFSHORE WIND FARM CONSTRUCTION WORKS

NOTICE IS HEREBY GIVEN that construction activities are in progress at the Dudgeon Offshore Wind Farm.

Wind turbine generators will be installed until Q3 2017. All construction work is planned to be completed late 2017.

Service Operation Vessel

The ESVAGT NJORD will be performing preparation support for the operation of the wind farm and will be in regular transit between the Dudgeon site and Great Yarmouth.

Wind Turbine Generator Installation

The SEA CHALLENGER will perform installation of the wind turbine generators (WTG) from January 2017 until Q3-2017. WTG installation and commissioning work will be performed at the following locations in February - March:

| Location | Easting | Northing | Lon DD | Lat DD | Depth LAT [m] |
|-----------------|----------------|-----------------|---------------|---------------|----------------------|
| Sub-Station | 391 870 | 5 902 955 | 1,378776 | 53,264808 | -21,1 |
| L01 | 391 174 | 5 901 522 | 1,368835 | 53,251789 | -21,0 |
| L02 | 391 122 | 5 900 148 | 1,368526 | 53,239433 | -19,9 |
| L03 | 391 760 | 5 899 631 | 1,378257 | 53,234918 | -20,2 |
| L04 | 392 399 | 5 899 114 | 1,388002 | 53,230402 | -21,0 |
| L05 | 393 038 | 5 898 596 | 1,397745 | 53,225877 | -20,6 |
| K01 | 392 045 | 5 902 246 | 1,381639 | 53,258473 | -21,5 |
| K02 | 391 907 | 5 900 928 | 1,380019 | 53,246602 | -21,2 |
| K03 | 392 640 | 5 900 334 | 1,391200 | 53,241413 | -20,8 |
| K04 | 393 373 | 5 899 739 | 1,402378 | 53,236214 | -21,0 |
| K05 | 393 676 | 5 898 079 | 1,407470 | 53,221359 | -21,8 |
| T01 | 392 212 | 5 903 533 | 1,383706 | 53,270071 | -21,5 |
| T02 | 392 948 | 5 902 936 | 1,394938 | 53,264856 | -22,1 |
| T03 | 394 241 | 5 900 466 | 1,415137 | 53,242920 | -21,8 |
| T04 | 394 974 | 5 899 873 | 1,426312 | 53,237737 | -22,3 |
| T05 | 394 840 | 5 898 551 | 1,424742 | 53,225832 | -21,2 |
| J01 | 392 777 | 5 901 653 | 1,392808 | 53,253293 | -23,1 |

| Location | Easting | Northing | Lon DD | Lat DD | Depth LAT [m] |
|----------|---------|-----------|----------|-----------|---------------|
| J02 | 393 509 | 5 901 060 | 1,403974 | 53,248112 | -22,5 |
| J03 | 394 107 | 5 899 145 | 1,413569 | 53,231024 | -21,7 |
| J04 | 394 315 | 5 897 562 | 1,417208 | 53,216841 | -22,3 |
| J05 | 394 954 | 5 897 045 | 1,426945 | 53,212322 | -21,2 |
| F01 | 392 353 | 5 904 837 | 1,385377 | 53,281817 | -21,7 |
| F02 | 393 254 | 5 905 526 | 1,398654 | 53,288190 | -23,2 |
| F03 | 392 649 | 5 906 016 | 1,389417 | 53,292470 | -22,8 |
| F04 | 392 044 | 5 906 506 | 1,380177 | 53,296750 | -22,4 |
| F05 | 391 439 | 5 906 996 | 1,370936 | 53,301030 | -22,0 |
| F06 | 390 834 | 5 907 486 | 1,361693 | 53,305308 | -22,3 |

COORDINATE REFERENCE SYSTEM:

Datum: WGS84

Projection: UTM Zone 31N

Accommodation Vessel

The VESTLAND CYGNUS will be on location until Q4-2017 as accommodation vessel for Turbine commissioning.

Commissioning activities

For the commissioning and construction work there are several Crew Transfers Vessels operating in the wind farm area on a daily basis. This activity is ongoing and will continue until commissioning completes in Q4 2017.

Rock Installation

A rock installation campaign for scour protection of foundations will be ongoing in the period early May until mid-June. Vessel spread; Rock installation vessel Van Oord – HAM 602, a survey vessel, and 4 bulk carriers for rock supply.

The three intended anchor locations for the rock transfer from the bulk carriers are identified in the plot later in this notice.

Guard Vessel

The RESOLUTE or the ADVENTURE will be present at the site to safe guard the wind farm area.

GENERAL

MARINERS ARE HEREBY INFORMED that a statutory construction Safety Zone (exclusion zone) is in place at the wind farm site. This safety zone is defined by:

- A 500 metres radius around each wind turbine, offshore sub-station and their foundations whilst work is being performed as indicated by the presence of construction vessels; and
- A 50 metres radius around each wind turbine, the offshore sub-station platform and associated foundation structures installed, complete or incomplete but waiting to be commissioned as part of the Dudgeon offshore wind farm where personnel are present on, or are being landed on or being taken from, the structures.

All vessels will exhibit appropriate lights and shapes prescribed by the International Regulations for Preventing Collisions at Sea.

ALL VESSELS ARE REQUESTED to give all construction and support vessels a wide berth.

MARINERS ARE ADVISED to navigate with caution and keep continued watch on VHF Ch. 16 when navigating the area.

A further notice to mariners will be issued when these works are completed, expected autumn 2017.

Please direct any enquiries regarding this notice to Statoil Wind Control Centre: statoilwindcontrol@statoil.com

A copy of this notice can also be found at:

<http://dudgeonoffshorewind.co.uk/news/notice-to-mariners>

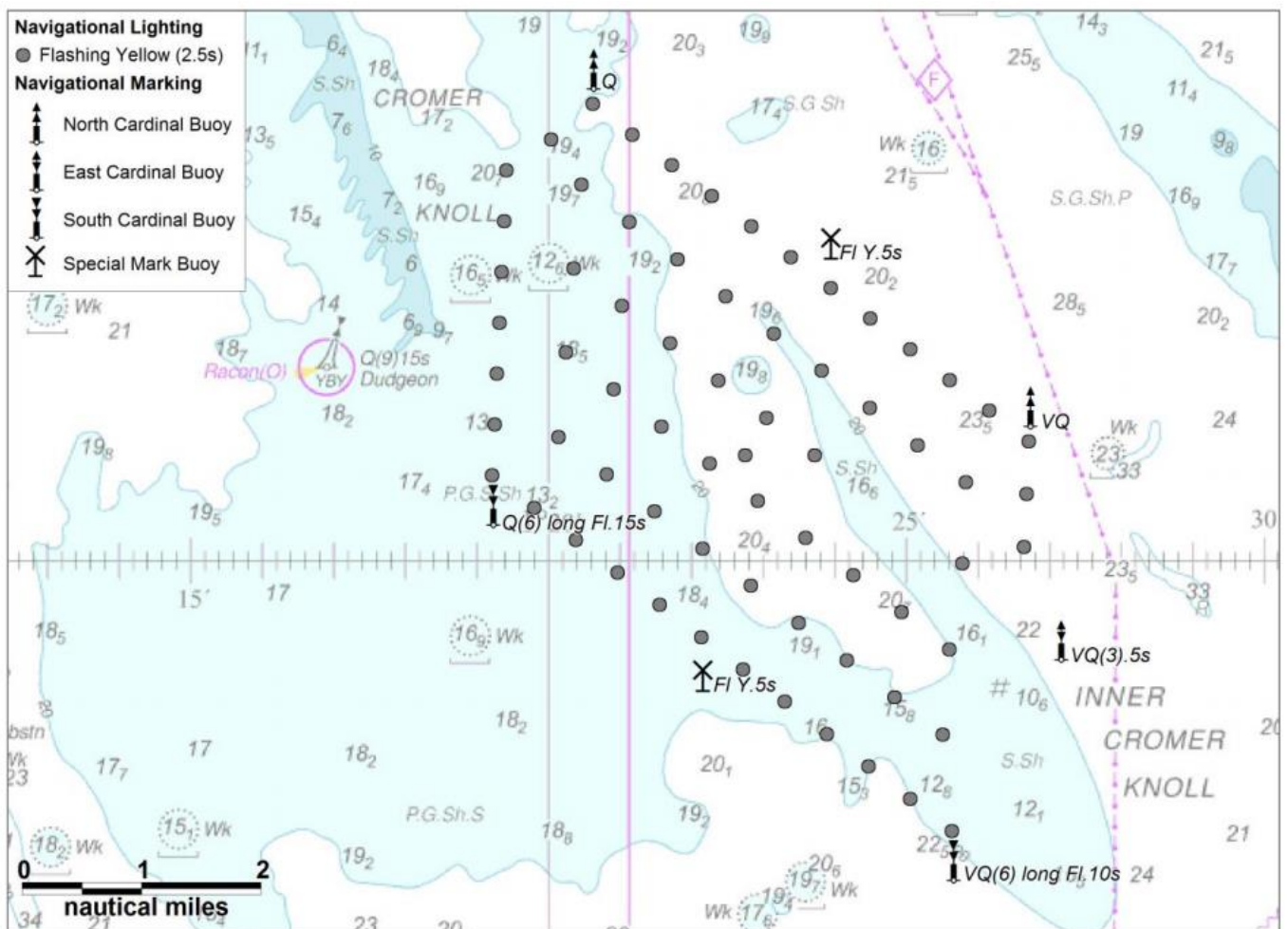
Fishing

The Dudgeon Wind Farm area is closed to fishing. The coordinates for the area of the closed area are included below.

SITE DETAILS

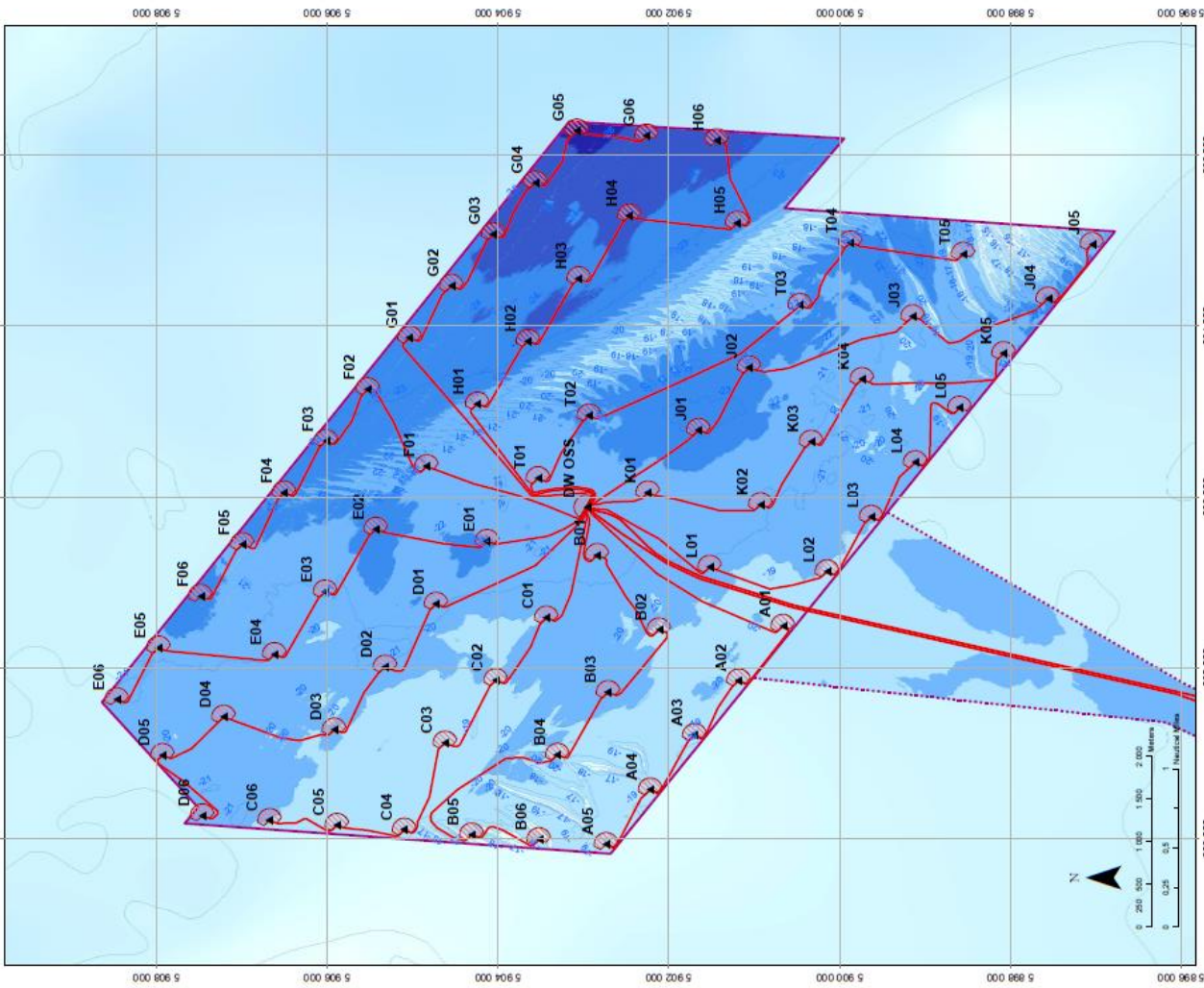
Position of Navigation Buoys demarcating the Dudgeon Offshore Wind Farm site

| Mark | Location | Name | Latitude | Longitude | Status | Flash Character | Code | Range |
|----------------|---------------------|---------------------|---------------|--------------|------------------|-------------------|------|-------|
| North Cardinal | NW Cardinal | N-DOW | 53° 19,102' N | 1° 20,592' E | Temporary | Q | 601 | 5nm |
| Special Mark | Special Mark North | DOW - SM - N | 53° 17,631' N | 1° 23,919' E | Temporary | Fl.Y.5s | 328 | 5nm |
| North Cardinal | North East Cardinal | NE - DOW | 53° 16,277' N | 1° 26,691' E | Temporary | VQ | 501 | 5nm |
| East Cardinal | East Cardinal | E- DOW | 53° 14,320' N | 1° 27,123' E | Temporary | VQ(3).5s | 508 | 5nm |
| South Cardinal | SE Cardinal | S - DUDGEON | 53° 12,470' N | 1° 25,617' E | Permanent | VQ(6) long Fl.10s | 516 | 5nm |
| Special Mark | Special Mark South | DOW - SM - S | 53° 14,012' N | 1° 22,132' E | Temporary | Fl.Y.5s | 328 | 5nm |
| South Cardinal | SW Cardinal | SW - DOW | 53° 15,451' N | 1° 19,188' E | Temporary | Q(6) long Fl.15s | 631 | 5nm |



WTG ID and locations (coordinates)

| WTG and Substation Locations | | | | | | | | | | | |
|------------------------------|----------|----------|---------|----------|-----------|---------|----------|----------|---------|----------|-----------|
| WTG ID | Easting | Northing | Lon DD | Lat DD | Depth LAT | WTG | Easting | Northing | Lon DD | Lat DD | Depth LAT |
| A01 | 380483.0 | 500066.0 | 1.38777 | 53.24347 | -18.5 | F06 | 380634.0 | 500748.0 | 1.38163 | 53.30508 | -22.3 |
| A02 | 388945.0 | 501153.0 | 1.34842 | 53.24869 | -18.6 | G01 | 388980.0 | 500036.0 | 1.40780 | 53.25308 | -23.6 |
| A03 | 388206.0 | 500218.0 | 1.33629 | 53.25282 | -18.2 | G02 | 394465.0 | 500564.0 | 1.41719 | 53.27928 | -23.6 |
| A04 | 388588.0 | 500218.0 | 1.33849 | 53.25702 | -18.2 | G03 | 388570.0 | 500485.0 | 1.40381 | 53.27543 | -24.3 |
| A05 | 387628.0 | 500278.0 | 1.31878 | 53.26201 | -18.6 | G04 | 388675.0 | 500356.0 | 1.40381 | 53.27100 | -25.1 |
| A06 | 391131.0 | 500947.0 | 1.37598 | 53.26985 | -21.5 | G05 | 388281.0 | 500255.0 | 1.44272 | 53.25603 | -20.4 |
| B01 | 380709.0 | 500711.0 | 1.34648 | 53.26170 | -18.6 | H01 | 380526.0 | 500434.0 | 1.38667 | 53.27837 | -20.4 |
| B02 | 380709.0 | 500711.0 | 1.34648 | 53.26170 | -18.6 | H02 | 380320.0 | 500348.0 | 1.40780 | 53.27148 | -23.9 |
| B03 | 388924.0 | 500431.0 | 1.32081 | 53.27817 | -18.2 | H03 | 384653.0 | 500095.0 | 1.41883 | 53.28248 | -23.9 |
| B04 | 388924.0 | 500431.0 | 1.32081 | 53.27817 | -18.2 | H04 | 385287.0 | 500461.0 | 1.43049 | 53.28104 | -24.4 |
| B05 | 380580.0 | 500344.0 | 1.35028 | 53.26910 | -18.2 | H05 | 385204.0 | 501180.0 | 1.42831 | 53.24868 | -22.5 |
| B06 | 388945.0 | 500427.0 | 1.34812 | 53.27404 | -18.4 | H06 | 380170.0 | 501440.0 | 1.44376 | 53.25063 | -24.5 |
| C01 | 380580.0 | 500344.0 | 1.35028 | 53.26910 | -18.2 | T01 | 382212.0 | 500363.0 | 1.38370 | 53.27071 | -21.5 |
| C02 | 388117.0 | 500462.0 | 1.33637 | 53.27028 | -18.4 | T02 | 382248.0 | 500398.0 | 1.38438 | 53.24620 | -21.8 |
| C03 | 388117.0 | 500462.0 | 1.33637 | 53.27028 | -18.4 | T03 | 384241.0 | 500468.0 | 1.41637 | 53.24202 | -21.8 |
| C04 | 388153.0 | 500569.0 | 1.32147 | 53.28328 | -20.0 | T04 | 384674.0 | 500873.0 | 1.42832 | 53.23737 | -21.2 |
| C05 | 388206.0 | 500675.0 | 1.32262 | 53.28747 | -20.0 | T05 | 384640.0 | 500851.0 | 1.42832 | 53.23532 | -21.2 |
| C06 | 380741.0 | 500472.0 | 1.35124 | 53.28048 | -20.9 | J01 | 382777.0 | 501053.0 | 1.38288 | 53.25393 | -23.1 |
| D01 | 380006.0 | 500520.0 | 1.33878 | 53.28091 | -20.9 | J02 | 383509.0 | 501060.0 | 1.40397 | 53.24812 | -22.5 |
| D02 | 380006.0 | 500520.0 | 1.33878 | 53.28091 | -20.9 | J03 | 384107.0 | 500945.0 | 1.41358 | 53.23104 | -22.3 |
| D03 | 388420.0 | 500713.0 | 1.34057 | 53.30262 | -20.2 | J04 | 384315.0 | 500752.0 | 1.41728 | 53.21694 | -22.3 |
| D04 | 388420.0 | 500713.0 | 1.34057 | 53.30262 | -20.2 | J05 | 384654.0 | 500704.0 | 1.42846 | 53.21222 | -21.2 |
| D05 | 388265.0 | 500746.0 | 1.33358 | 53.30891 | -20.3 | K01 | 382045.0 | 500246.0 | 1.38163 | 53.25873 | -21.5 |
| D06 | 388265.0 | 500746.0 | 1.33358 | 53.30891 | -20.3 | K02 | 381807.0 | 500092.0 | 1.38018 | 53.24602 | -21.2 |
| E01 | 391477.0 | 500412.0 | 1.37478 | 53.27527 | -22.2 | K03 | 382940.0 | 500034.0 | 1.38130 | 53.24143 | -20.8 |
| E02 | 391816.0 | 500431.0 | 1.37478 | 53.27527 | -22.2 | K04 | 383737.0 | 500079.0 | 1.40278 | 53.23621 | -21.0 |
| E03 | 388989.0 | 500025.0 | 1.32975 | 53.26219 | -20.7 | L01 | 381774.0 | 500152.0 | 1.38836 | 53.25178 | -21.8 |
| E04 | 380153.0 | 500916.0 | 1.35178 | 53.28737 | -20.6 | L02 | 381720.0 | 500146.0 | 1.38836 | 53.25178 | -21.8 |
| E05 | 380220.0 | 500916.0 | 1.35178 | 53.28737 | -20.6 | L03 | 381700.0 | 500146.0 | 1.38836 | 53.25178 | -21.8 |
| E06 | 388265.0 | 500946.0 | 1.34201 | 53.31983 | -21.1 | L04 | 381700.0 | 500146.0 | 1.38836 | 53.25178 | -21.8 |
| F01 | 382353.0 | 500487.0 | 1.36537 | 53.28197 | -21.7 | L05 | 381700.0 | 500146.0 | 1.38836 | 53.25178 | -21.8 |
| F02 | 382353.0 | 500487.0 | 1.36537 | 53.28197 | -21.7 | L06 | 383230.0 | 500629.0 | 1.39735 | 53.25277 | -20.0 |
| F03 | 382353.0 | 500487.0 | 1.36537 | 53.28197 | -21.7 | Sub St | 381870.0 | 500265.0 | 1.37878 | 53.25408 | -21.0 |
| F04 | 382353.0 | 500487.0 | 1.36537 | 53.28197 | -21.7 | (OW/OS) | | | | | |
| F05 | 381430.0 | 500868.0 | 1.37038 | 53.30103 | -22.0 | | | | | | |



Legend Main Map

- ▲ WTG Layout Design Basis
- Evacuation Zone
- Sub Station
- Planned Interarray Cable Route
- Planned Export Cable Route
- Consented Field Outline
- Bathymetry (m rel. to LAT)
 - 26
 - 24-26
 - 22-24
 - 20-22
 - 18-20
 - 16-18
 - 14-16
 - 12-14

Statoil

Dudgeon Offshore Windpark

WTG and Substation Locations

UK / North Norfolk

Scale: 1:50000

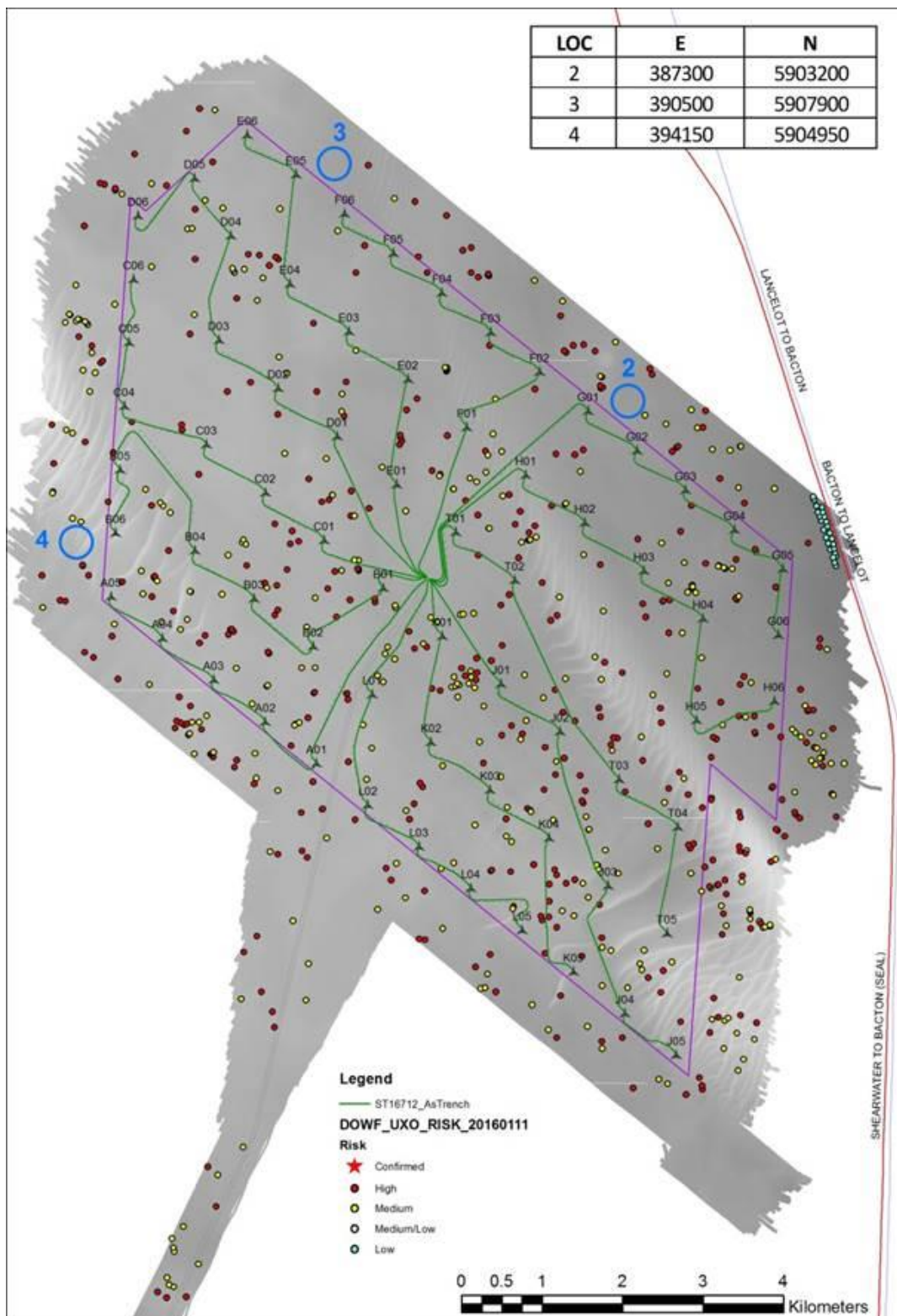
Project ID: C177-DOW-N-XE-0001-01

Map includes bathymetry from seabed survey. ST-13504 DOWF Sub and Seabed Mapping (2013). According to the subcontractor's error budget for this survey the accuracy is as follows:

The (horizontal) accuracy for navigation is +/- 20 cm (horizontal determined by the dynamic position calibration for primary and secondary navigation system)

The vertical accuracy bathymetry: At 20m water depth the total vertical uncertainty is +/- 27cm. At 50m water depth the total vertical uncertainty is +/- 33 cm.

Rock Installation Campaign. Anchor locations for rock transfer



KEY CONSTRUCTION VESSEL CONTACT DETAILS

ESVAGT NJORD



Call sign: OWZN2

Bridge Phone: VSAT.TEL: +45 32 71 26 89; / GSM: +45 32 71 26 85

E-mail: njord@esvagtvesel.com

SEA CHALLENGER



Call sign: OWLQ2

Bridge Phone: V-sat: +45 89 88 90 10

Master phone: vsat +45 89 88 90 11 / GSM +45 52 13 95 80

E-mail: seachallenger@a2sea.com / Master mast_sc@a2sea.com

VESTLAND CYGNUS



Callsign: C6BW7

Bridge Phone: VSAT.TEL: +4723677230; +4723677230 / GSM: +47 41 43 02 07

E-mail : captain.cygnus@vestlandoffshore.no ; bridge.cygnus@vestlandoffshore.no

Van Oord – HAM 602



Callsign: PENF

Bridge Phone: Hold

E-mail: Hold

ADVENTURE



Callsign: 2IFE4

Bridge Phone: V-sat 01947750717

E-mail: adventureGS@gmail.com / adventure.guard1@gmail.com

Resolute



Callsign: MLPD5

Bridge Phone: +44 284 179 8209

E-mail: resolute.guard1@gmail.com

Advance WY77



Callsign: MZNA6

Bridge Phone: Sat. Phone: 00870773231090/01947 240024

E-mail: adventureGS@gmail.com